

REGION BOARDSMANSHIP

Presenters:


Bonnie Russell

Pat Assortato

Joan Wabnik



PTA REGIONS

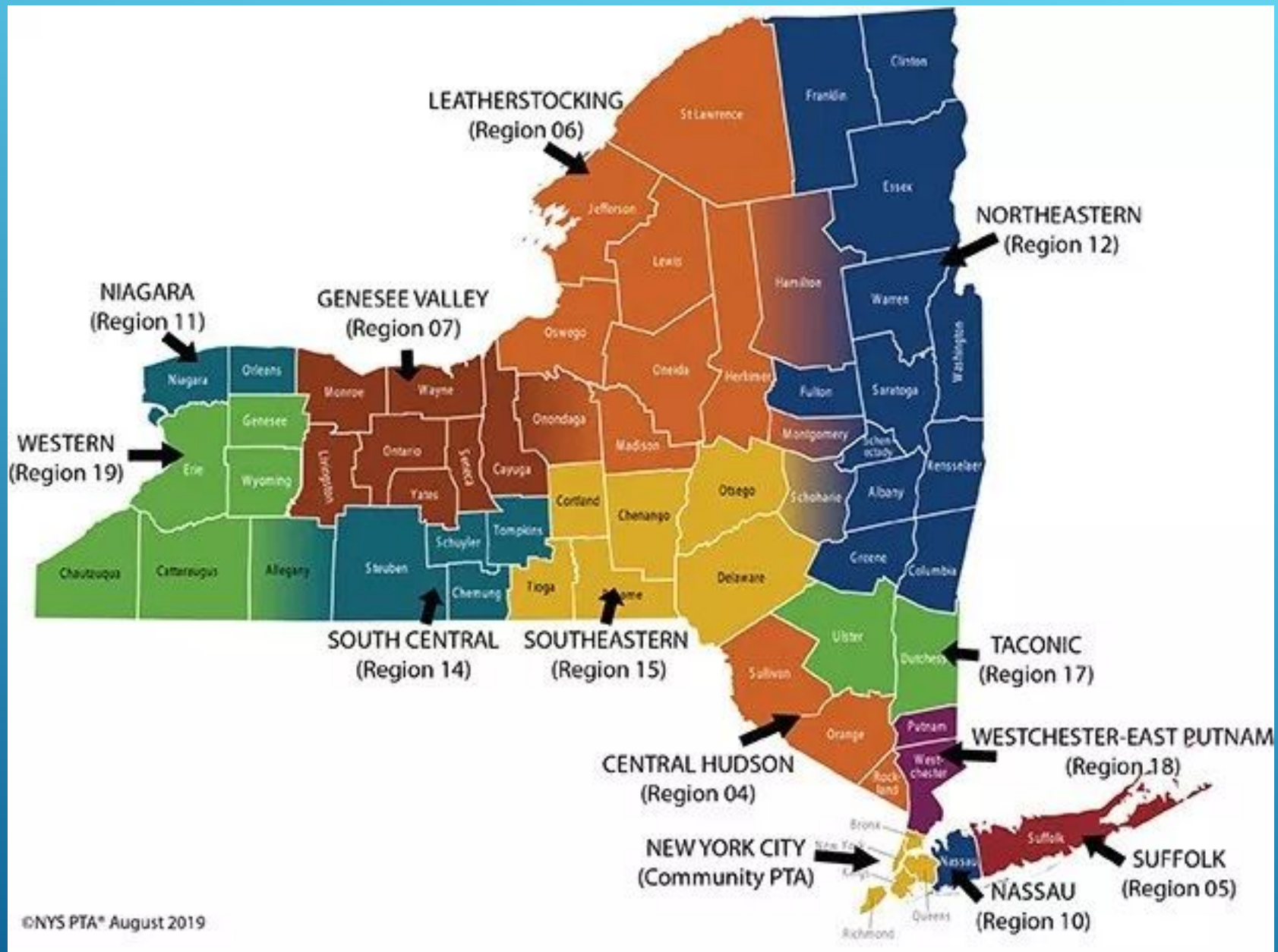
- There are 12 regions of New York State PTA
 - The Region Director is appointed by NYS PTA Executive Committee and is a member of the NYS PTA Governance Team
 - The Region is composed of councils and units in the designated geographic area
 - The region board consists of the elected region officers, region chairs and assistant directors to assist units and councils. NYS PTA Governance team members are also part of the region board.
 - Membership is represented by voting delegates (representing the member units and councils) to the annual meeting (Spring Conference)
- 

PTA REGIONS

- Regions are geographical divisions of the New York State PTA organized to provide service to the units and councils within their territory.
- Region boards are its administrators.
- The region director voices the interests and concerns of units and councils within the region and shares information from the state PTA.

The Region PTA:

- Interprets National and New York State PTA policies, procedures and programs.
- Provides leadership training through conferences, workshops and schools of instruction.
- Organizes and charters units and councils.
- Gives advisory and supportive services to units and councils through the director, officers, assistant and/or associate directors and chairmen.



THE ROLE OF A REGION BOARD MEMBER

- Assistant or associate directors are assigned the task of maintaining contact with specific units and councils within a region. They confer with units and councils on local concerns and help them resolve problems.
- Chairs are appointed to perform specific tasks or focus on issues such as health and welfare, arts, family engagement, reading, environment, education and special education.
- Chairs serve as a resource for units and councils and should be knowledgeable in the area to which they are assigned
- Region PTA boards should be composed of experienced volunteers who were once unit and council leaders and understand PTA and the needs of today's volunteers.



THE RESPONSIBILITIES OF A REGION BOARD MEMBER

Same as Local PTA:

ACCEPT a position only if able to devote sufficient time and energy to do the job thoroughly

KNOW and ADHERE to PTA philosophy, principles and policies

MEET DEADLINES by submitting reports and materials on time and fulfilling assignments promptly

TAKE INITIATIVE AND RESPONSIBILITY for your own work

KEEP RECORDS AND NOTES concerning the work you do

FIDUCIARY RESPONSIBILITY to the REGION, to act in its best interest at all times.

THE RESPONSIBILITIES OF A REGION BOARD MEMBER

Unique to Region PTA:

ATTEND and ASSIST AT Region events

PRESENT WORKSHOPS and TRAININGS for unit and council members

WRITE ARTICLES for the Region newsletter or website

MAINTAIN a current list of contacts relevant to your position

ATTEND NYS PTA and National PTA events as your Region budget allows

COLLABORATE with your NYS PTA counterpart



SKILLS IMPORTANT FOR SERVING ON A REGION BOARD

There is no I in TEAM

Willingness to learn

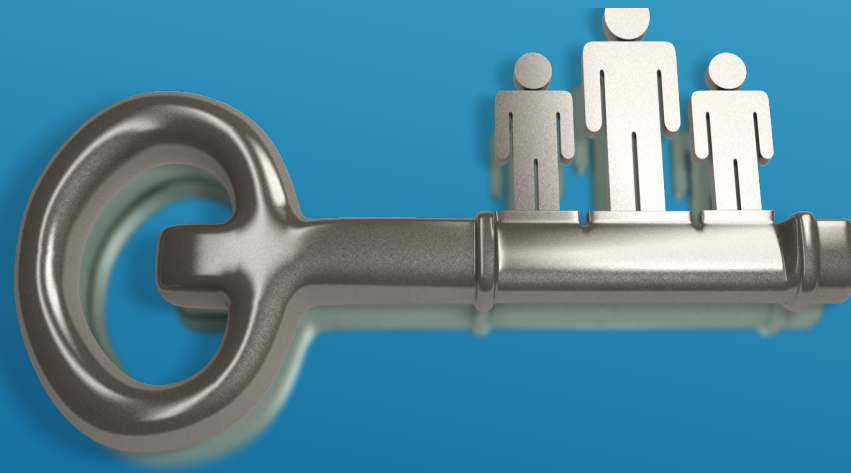
Ability to effectively communicate

Desire to share knowledge with others



COMMUNICATION

THE KEY TO EVERYTHING!



QUESTIONS

