

**Know your story!**

**Tell your story!**

**Sell your story!**

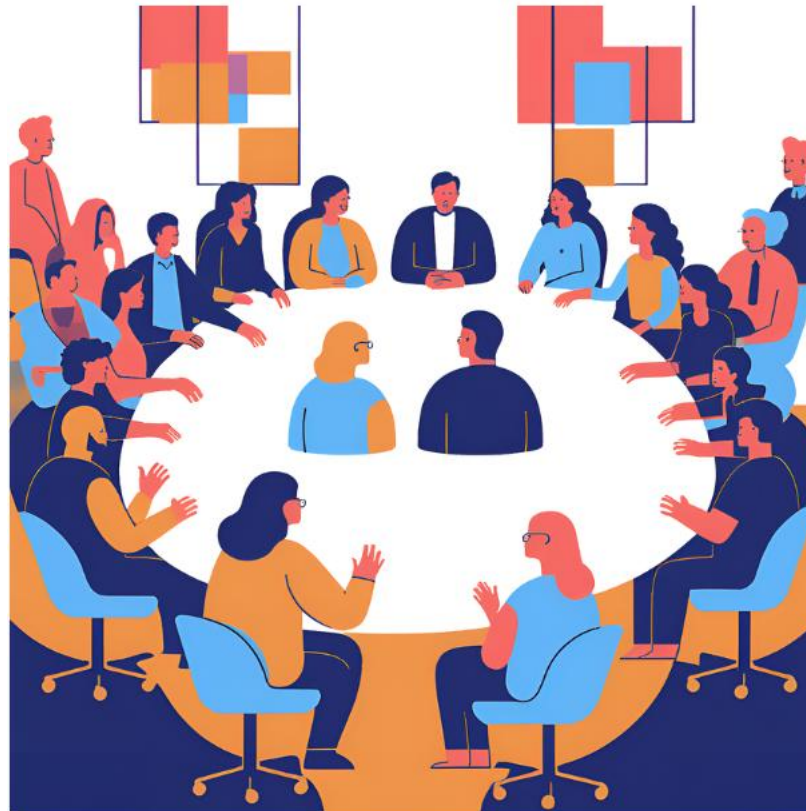
**NYSPTA Presentation- 7/19/25**

**Bob Vecchio, Executive Director, Nassau-Suffolk School Boards Association**



# Advocacy why does it matter?

**If you don't have a seat at the table,  
you're an item on the menu!**



# Work with your district's governance team to effectively advocate for your district

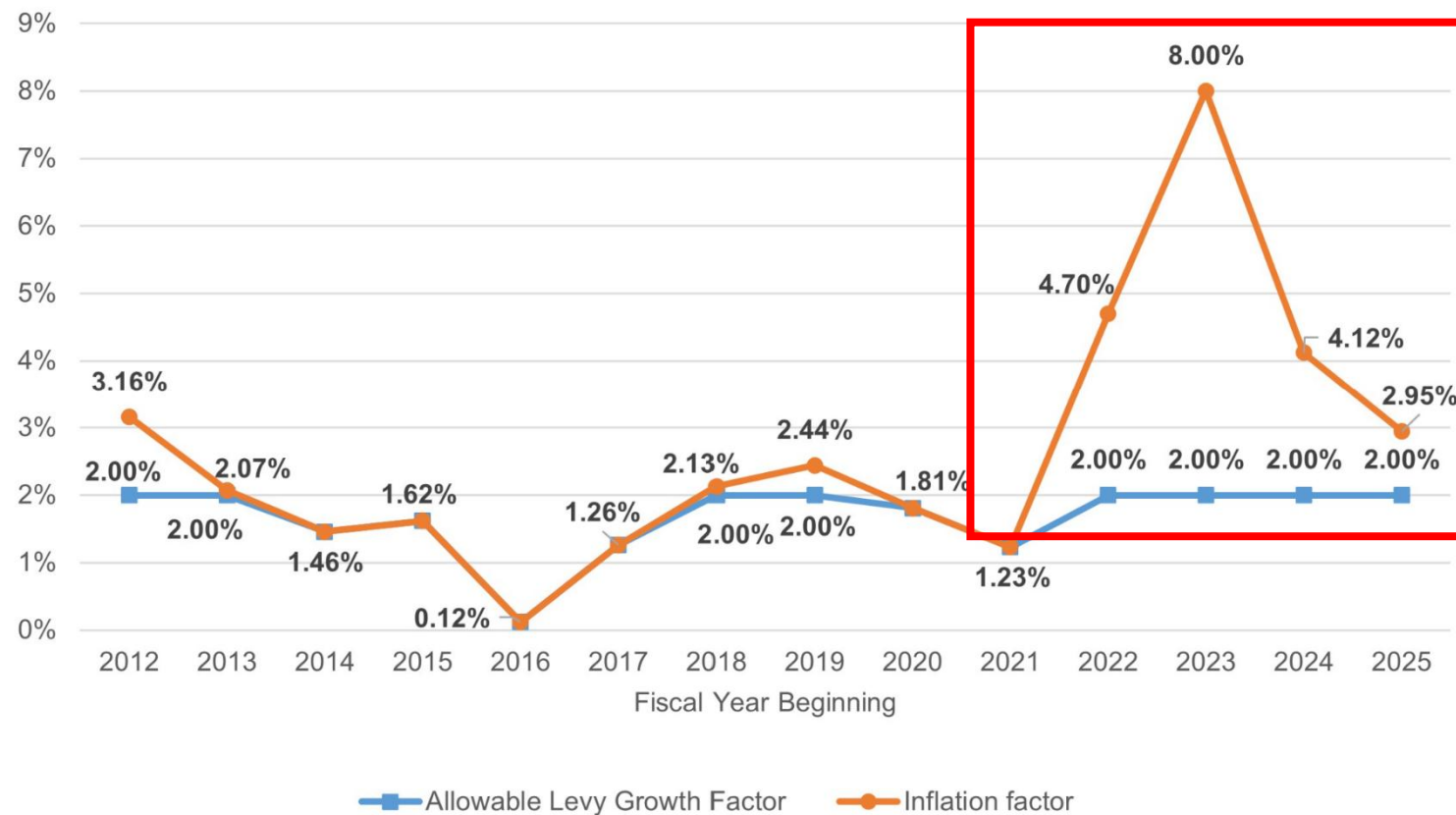
- Make sure your team is prepared! Know the facts!
- Who leads the meetings? Who is most effective with presentation?
- Make sure all voices are heard, no one voice dominates.
- *Be on the offensive, without being offensive!*
- Tell your district and community's story!

# Relationships with Legislators Matter, Build Them!

- Don't only meet with your legislators or the staff once a year, advocacy is a year-round job
- If they only hear from you once, they may think the issues aren't that important
- Invite your legislators to events at your schools
- Go to local meetings where they are scheduled to speak, like civic meetings, town halls
- Follow them on social media
- Regardless of political affiliation, work with them professionally and respectfully



# This year's budget issues



**A gap of  
11.14% over  
the last 4 years**

# **What is your district's data?**

**What adjustments has your district made due to enrollment changes over 10 years?**

**How about projected changes going forward?**

**How has your district's demographics changed over the last 10 years?**

**How has your outcomes improved over the last 10 years?**

# What is your district's data?



Elmont Union Free School District



<b>Total Enrollment</b>	<b>3,382</b>
Total Pre-K to grade 2	1,576
Total Grade 3 to grade 6	1,806
Total Special Education	388
Total SIFE students	3
Total ENL students	394
Total Homeless	17

Gender	
Female	48.7%
Male	51.3%

Free & Reduce Lunch Count	
#	%
1859	55%

	Total	%
Total ENL students	394	11.6%
Total Special Education	388	11%

- **Combine Wealth Ratio: 0.83300**
- **Total ESL Dollars Spent: \$ 2,318,128**
- **Total IDEA owed to district: \$1,017,252**

- Effect on district due to lack of fully funding IDEA Education at Elmont UFSD via IDEA, total IDEA funding would be \$7,755,144, not \$1,017,252. If Congress were to fund 40 percent of cost of Special Education at Elmont UFSD via IDEA, total IDEA funding would be \$7,755,144, not \$1,017,252. If the \$6,737,892 gap in funding special education were provided, the district could expand special education services to \$26.1 million, instead of \$19.4 million, a 35% increase in special education teachers, aides, and materials.

Languages Spoken:	Total Students	%
Arabic	5	1%
Bengali	12	3%
Chinese	7	2%
French	4	1%
Haitian Creole	20	5%
Hindi	3	1%
Korean	1	0%
Malayalam	6	2%
Punjabi	16	4%
Pashto	16	4%
Spanish	232	61%
Turkish	2	1%
Urdu	56	15%
Vietnamese	2	1%
Totals	382	

Ethnicity by Grade:							
Grade	Hispanic	American Indian/Alaskan	Asian	Black	Multiracial	Pacific Islander	White
	%	%	%	%	%	%	%
<b>PKF</b>	22%	1%	39%	37%	4%	0%	19%
<b>K</b>	31%	2%	32%	35%	5%	2%	23%
<b>1</b>	33%	2%	24%	42%	2%	2%	29%
<b>2</b>	33%	1%	26%	38%	3%	1%	31%
<b>3</b>	36%	2%	23%	39%	3%	2%	30%
<b>4</b>	28%	0%	27%	38%	4%	1%	30%
<b>5</b>	30%	1%	23%	42%	4%	1%	29%
<b>6</b>	31%	2%	21%	45%	2%	1%	29%
<b>DISTRICT</b>	<b>31%</b>	<b>2%</b>	<b>26%</b>	<b>40%</b>	<b>3%</b>	<b>1%</b>	<b>28%</b>

- The District need for increased ESEA investment would enable us to hire the additional staff needed to provide the academic intervention support for our students in light of the pandemic academic gaps. Specific focus on English Language Learners, students with disabilities and bridging the literacy gap in the primary grades. The increase in the ESEA funds will continue to fund our Social Emotional learning curriculum.

135 Elmont Road, Elmont, NY 11003 \* 516-326-5500 \* [www.elmontschools.org](http://www.elmontschools.org)

# What is your district's data?

2024-2025



## School Data Advocacy Collection Tool

	2014 Actual Cost	2014 - % of Budget	2024 Actual Cost	2024 - % of Budget	2014 - % of Enrollment	2024 - % of Enrollment
ENL Services	\$ 1,232,610	0.57%	\$2,435,985.51	0.84%	4%	9%
Special Education	\$ 37,299,352	17.21%	\$50,390,048.30	17.32%	16%	20%
Cybersecurity	\$ 105,764	0.05%	\$143,726.00	0.05%		
Insurance	\$ 1,061,936	10.60%	\$ 1,598,790	14.55%		
Mental Health	\$ 4,210,404	1.94%	\$5,485,491.41	1.89%		
Physical Security	\$ 1,456,803	0.67%	\$2,329,830.45	0.80%		
Other Operational	\$ 11,555,042	5.33%	\$16,060,064.58	5.52%		

WWW.SUFFOLKSUPERINTENDENTS.ORG



# **What is your district's budget priorities this year?**

**Who are the stakeholder groups in your community?**

**Business Groups, Civic Groups, Neighbors**

**Be aware of your Board's talking points on the budget and legislative priorities!**

**When Assemblymembers and State Senators are meeting with groups in the community, attend those meetings!**

## **Be an ambassador for your district**

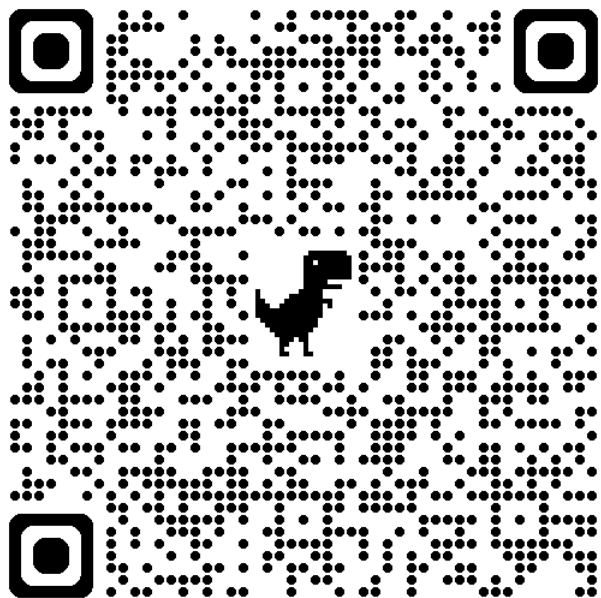
**Know the facts, know your enrollment changes, what is the tax impact for the average homeowner?**

**What are the successful programs in your district?**

**Tell the stakeholders how the district has benefitted your children.**

**Encourage people to attend meetings and ask questions!**

Link to Costs &  
Outcomes Report 2024

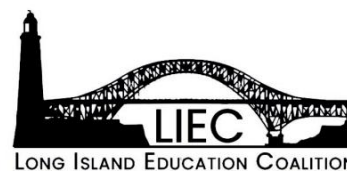


# Long Island Education Costs and Outcomes



# 2024

**Long  
Island  
Association**



**N-SSBA**  
Nassau-Suffolk School Boards Association

# Did you know?

## Regional Enrollment

Region	Total Number of Students (2022-23)	% of Students Enrolled in Low-Wealth School Districts
Suffolk County	217,771	59.3
Eastern Suffolk BOCES	144,980	66.2
Western Suffolk BOCES	72,791	45.6
Nassau County (Nassau BOCES)	190,372	37.3
Long Island	408,143	49.1

**Note:** Total number of students excludes enrollment in Charter Schools.

**Source:** New York State Education Department, 2022-23 School Report Card database.

# Did you know?

**TABLE 11**

## Students Classified as English Language Learners (ELLs) as a Percentage of Enrollment

Rank	County/Region	Total Enrollment	% Classified as ELL	
			N	%
1	Franklin	6,649	2	0.0
56	Rockland	38,961	7,832	20.1
Median 28	Saratoga	31,360	412	1.3
55	Long Island	414,094	44,927	10.8
	Rest of State (excluding NYC and LI)	1,071,282	57,563	5.4
	New York State (excluding NYC, including LI)	1,485,376	102,490	6.9

**Description:** Number of English Language Learner (ELL) students enrolled in public schools, divided by the total public school enrollment of the region. Rankings closer to 1 indicate smaller percentages of Limited English Proficient students.

**Method of Ranking:** Long Island was compared to the other 55 counties in New York State (excluding New York City) by ranking the percentage of ELL students from lowest (1) to highest (56).

**Source:** New York State Education Department, 2022-23 School Report Card database.

# Did you know?

**TABLE 18**

## **Regional Cost Differences**

*(Based on the Professional Cost Index for New York State Labor Force Regions)*

Rank	Labor Force Region	Index Value	Purchasing Power \$1,000
1	North Country Mohawk Valley	1.000	\$1,000
9	Long Island/NYC	1.425	\$702
Median	Central New York	1.103	\$907

**Description:** This table presents cost differences by region as determined by the Regional Cost Index (2023). The Regional Cost Index reflects the professional service costs throughout the nine labor force regions of the state. The Regional Cost Index is based on median hourly wages for non-education professional titles statewide, obtained from the Occupational Employment Survey for New York State. The index begins at 1.00, being the labor force region with the lowest cost.

**Method of Ranking:** The nine Labor Force Regions were ranked by purchasing power using a Regional Cost Index derived from the New York State Education Department, Regional Cost Index (2023).

**Source:** New York State Education Department, Regional Cost Index (2023).

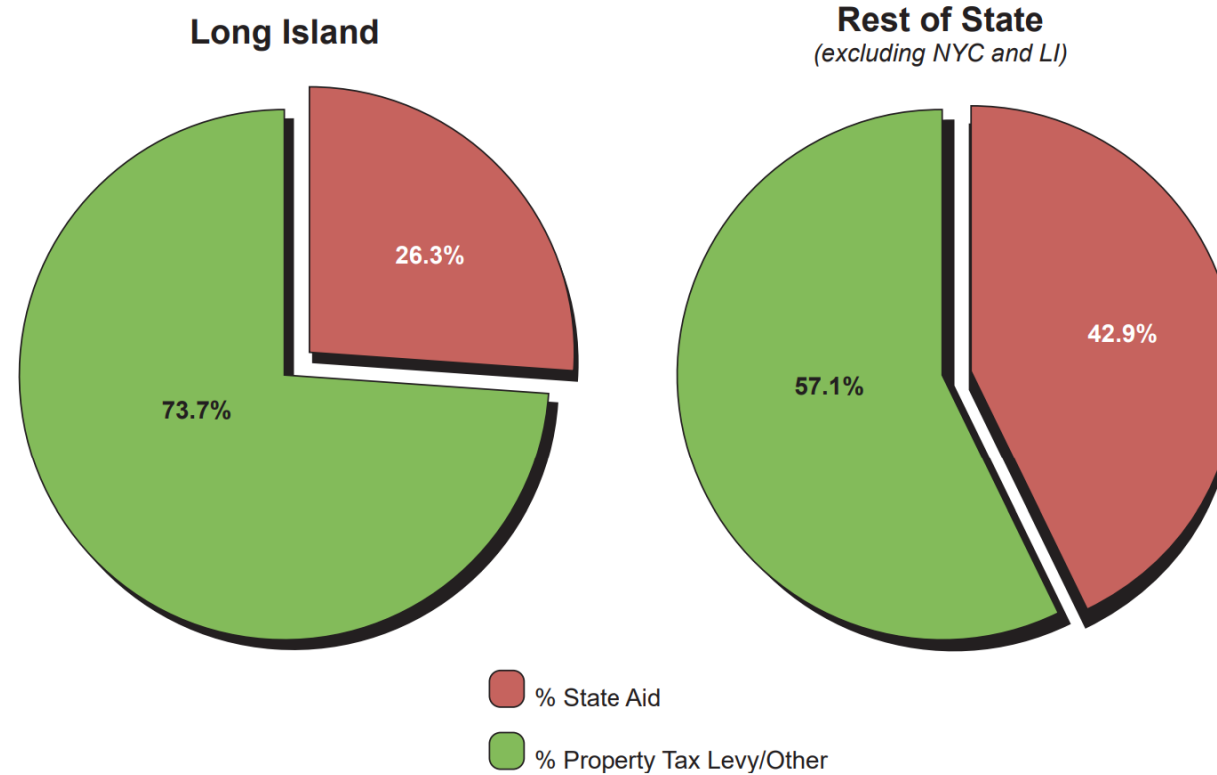


# Did you know?

The least-wealthy K-12 Long Island school districts meeting the selection criteria are (lowest to highest CWR):

Long Island School District	Enrollment	CWR	% Enrollment Change (2012-13 to 2022-23)
Hempstead Union Free School District	5,502	0.313	-12.4
Wyandanch Union Free School District	2,579	0.314	27.2
Brentwood Union Free School District	17,809	0.353	3.9
Roosevelt Union Free School District	2,947	0.355	6.0
Central Islip Union Free School District	7,547	0.418	17.4
William Floyd Union Free School District	9,008	0.474	0.4
Freeport Union Free School District	6,342	0.555	-1.4
Copique Union Free School District	4,638	0.591	-4.0
Uniondale Union Free School District	5,776	0.685	-9.7
Center Moriches Union Free School District	1,478	0.698	-12.0

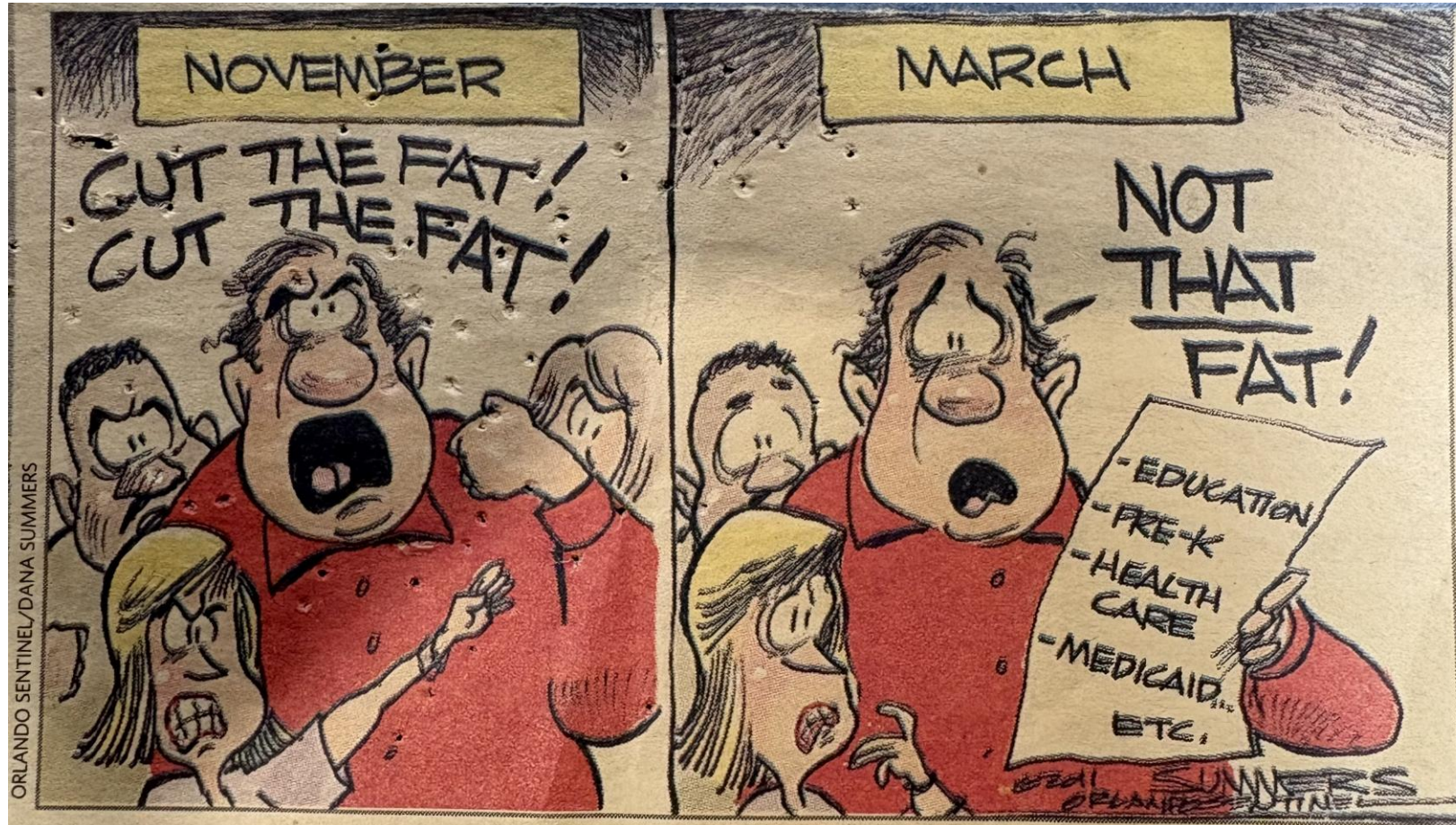
# Did you know?



## Key Fact:

1. The state share of school district revenues on Long Island (26.3%) continues to be among the five lowest in the state, along with Rockland (22.6%), Putnam (21.9%), Westchester (21.1%), and Hamilton (16.6%) counties.





ORLANDO SENTINEL/DANA SUMMERS

# Issues on the horizon

**Gov. Kathy Hochul directs agencies to cut \$750M, accuses GOP of creating 'intentional' pain**


[Listen • 5:07](#) Automated narration. [Learn more](#)





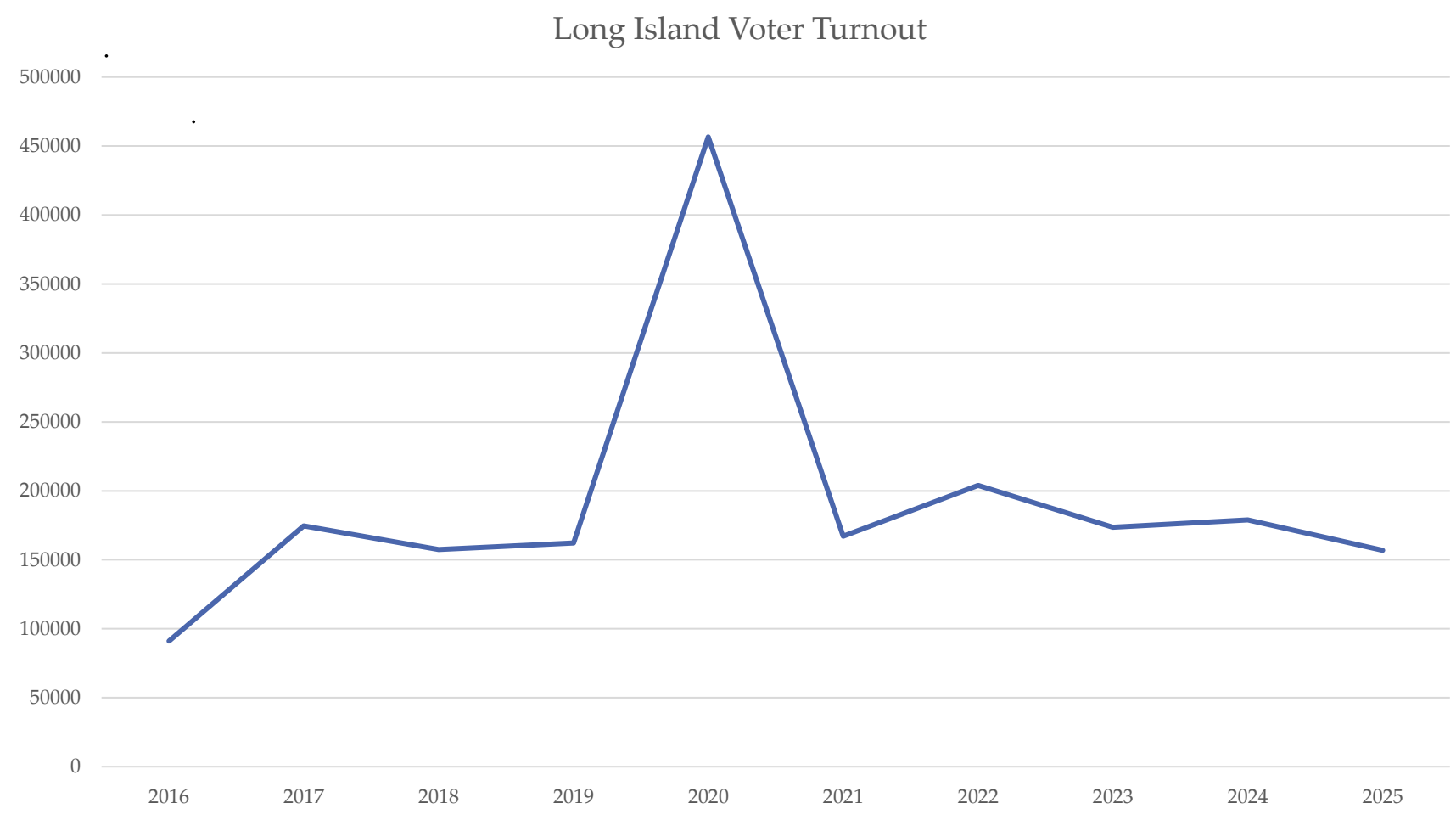
# Issues on the horizon

## Education Department layoffs: How they could impact Long Island schools and colleges

 Listen • 5:52 Automated narration. [Learn more](#)



# We need your help to get out the vote!





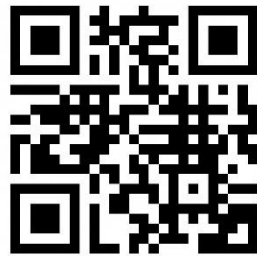
# Questions???



Thank you

N-SSBA

Nassau-Suffolk School Boards Association



**Nassau-Suffolk School  
Boards Association**

[www.nssba.org](http://www.nssba.org)