



Congrats

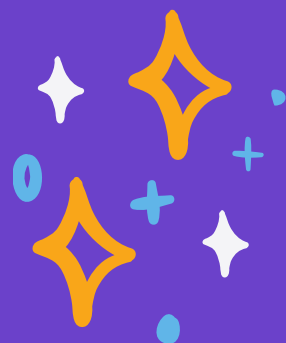
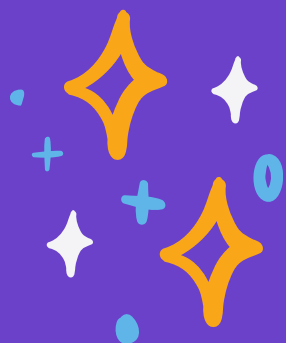
NOVEMBER SAVVY AWARDS

CENTRAL HUDSON REGION

04-248 EVANS PARK ELEMENTARY SCHOOL PTA

04-259 GOLDEN HILL PTA

04-263 EJ RUSSELL ELEMENTARY SCHOOL PTA





Congrats

NOVEMBER SAVVY AWARDS

SUFFOLK REGION

05-171 NORTH COLEMAN ROAD SCHOOL PTA

05-174 WAVERLY AVENUE PTA

05-191 LYNWOOD AVENUE SCHOOL PTA

05-195 DAWNWOOD MIDDLE SCHOOL PTA

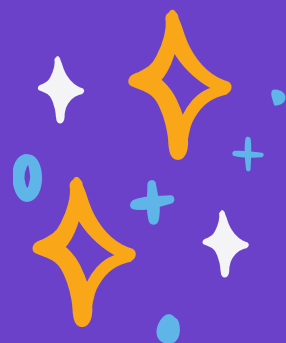
05-360 GREAT HOLLOW MIDDLE SCHOOL PTA

05-451 JOHN PEARL ELEMENTARY PTA

05-454 SOUTH OCEAN MIDDLE SCHOOL PTA

05-458 LONGWOOD MIDDLE SCHOOL PTA

05-579 MILLER PLACE PTA





Congrats

NOVEMBER SAVVY AWARDS

LEATHERSTOCKING REGION

06-389 CANAJOHARIE PTA





Congrats

NOVEMBER SAVVY AWARDS

GENESEE VALLEY REGION

07-152 ENGLISH VILLAGE SCHOOL PTA
07-247 WHEATLAND CHILI PTA





Congrats

NOVEMBER SAVVY AWARDS

NASSAU REGION

10-039 FRANKLIN EARLY CHILDHOOD CENTER PTA

10-045 INWOOD #2 SCHOOL PTA

10-072 FLORENCE A. SMITH SCHOOL PTA

10-120 ALBANY AVENUE PTA

10-142 PLAINEDGE MIDDLE SCHOOL PTA

10-146 PARK AVENUE SCHOOL PTA

10-234 OLD MILL ROAD SCHOOL PTA

10-249 WAVERLY PARK PTA

10-398 CENTRAL BOULEVARD PTA

10-428 VILLAGE SCHOOL PTA

10-463 UNIONDALE SEPTA

10-487 WANTAGH SEPTA

10-562 OBEN ELEMENTARY PTA





Congrats

NOVEMBER SAVVY AWARDS

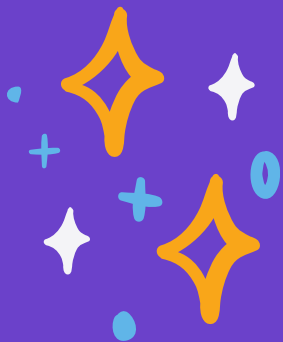
NORTHEASTERN REGION

12-035 MILLER HILL-SAND LAKE PTA

12-089 LOUDONVILLE SCHOOL PTA

12-095 ALTAMONT ELEMENTARY SCHOOL PTA

12-165 BIG CROSS STREET SCHOOL PTA





Congrats

NOVEMBER SAVVY AWARDS

TACONIC REGION

17-282 RONDOUT VALLEY MIDDLE SCHOOL PTSA





Congrats

NOVEMBER SAVVY AWARDS

WESTCHESTER-EAST PUTNAM REGION

18-021 EDGEMONT ELEMENTARY SCHOOLS PTA

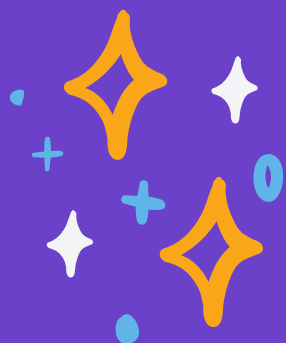
18-071 HARRISON AVENUE SCHOOL PTA

18-174 MAMARONECK HIGH SCHOOL PTSA

18-241 MARTIN H TRAPHAGEN ELEMENTARY SCHOOL PTA

18-325 PELHAM SEPTA

18-401 PLEASANTVILLE SEPTA





Congrats

NOVEMBER SAVVY AWARDS

WESTERN REGION

19-257 COUNTRY PARKWAY PTA

19-454 SAMUEL GURLEY LOVE SCHOOL PTA





Congrats

NOVEMBER SAVVY AWARDS

NOVEMBER SAVVY \$100 CASH PRIZE

04-259 GOLDEN HILL PTA

05-451 JOHN PEARL ELEMENTARY PTA

10-562 OBEN ELEMENTARY PTA

